

Nmq

PRODUCT N°1.0

ZAYED

PUBLICATION N°1.0 : PROJECT LAUNCH

Melee

the
power
of every
piece

iv

Welcome to

Nmq

where visionary concepts
are brought to life,
community thrives, and
sustainable living is the
foundation of a brighter
future. Explore the
possibilities, embrace the
exceptional, and make
Nmq your place to call
home.



/the power of every piece



PUBLICATION N°1.0

PRODUCT N°1.0



/the power of every piece

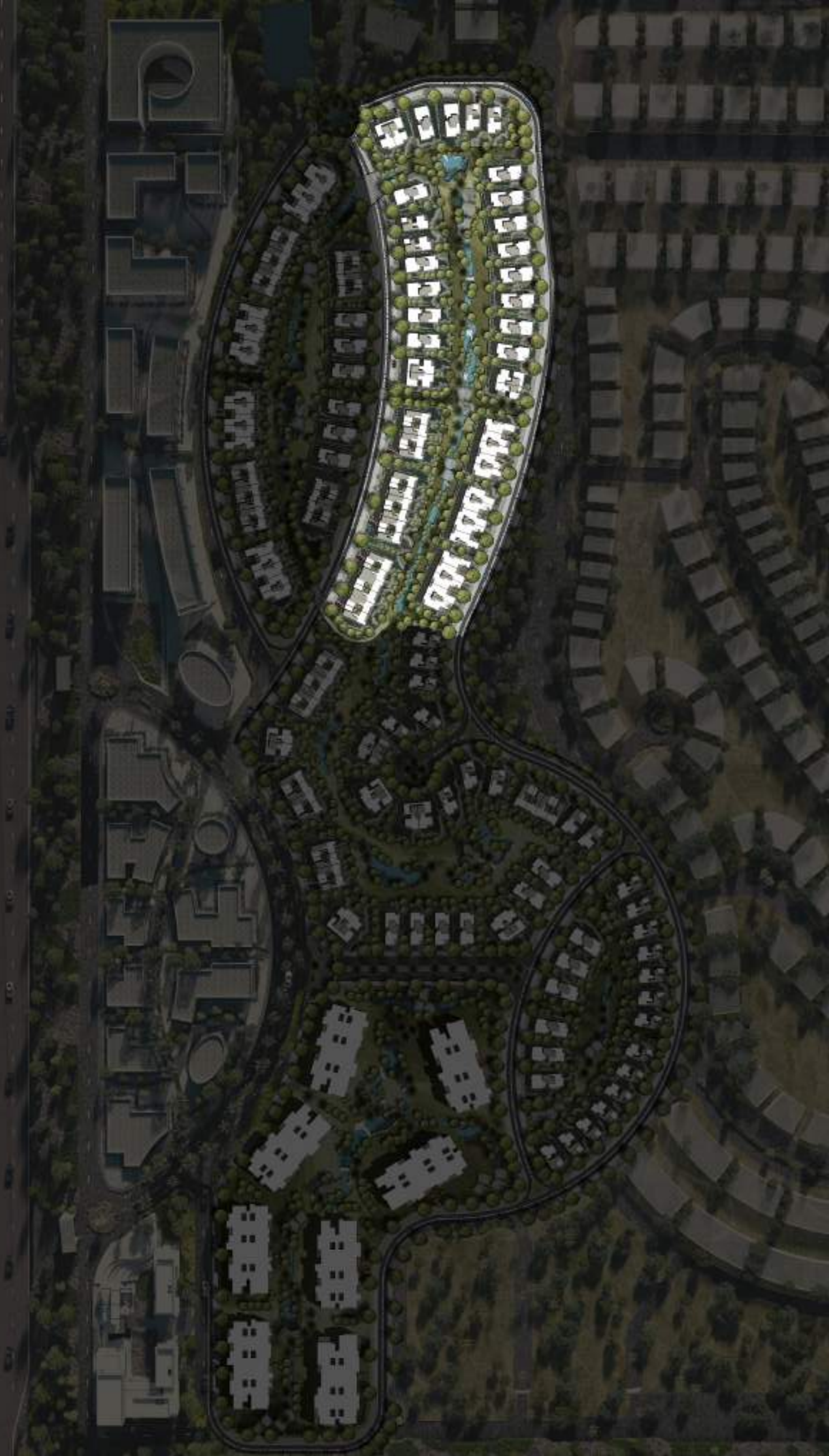
Location

Located in the west region of Egypt, specifically in the 6th of October district, placed between several distinguished residential compounds, With a direct accessibility on one main traffic spine (waslut Dahshour)











TN-01
TN-02

V-03
V-04
V-05
V-06

V-07

V-102

V-08

V-101

V-09

V-100

V-10

V-99

V-11

V-98

V-12

V-97

V-13

V-96

V-14

TW-95

TW-15

TW-94

TW-16

TH-93

TH-17

TH-92

TH-18

TH-91

TH-19

TH-90

TH-20

TH-21

TH-89

TH-22

TH-88

TH-23

TH-87

TH-24

TH-86

TH-25

TH-85

TH-26

TH-84

TH-83

TH-27

TH-82

TH-28

TH-81

TH-29

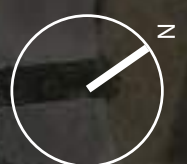
TH-80

TH-30

TH-79

TH-31

TH-78



PUBLICATION Nº 1.0

PRODUCT Nº 1.0



Nm villas



Core
and Shell

/the power of every piece



/The provided drawings, areas, dimensions, and building materials are presented as close to reality as possible. The company reserves the right to make amendments based on specifications outlined in their records and in accordance with the project's marketing plans.

PUBLICATION N° 1.0

PRODUCT N° 1.0



/The provided drawings, areas, dimensions, and building materials are presented as close to reality as possible. The company reserves the right to make amendments based on specifications outlined in their records and in accordance with the project's marketing plans.

/the power of every piece



/The provided drawings, areas, dimensions, and building materials are presented as close to reality as possible. The company reserves the right to make amendments based on specifications outlined in their records and in accordance with the project's marketing plans.

PUBLICATION N°1.0

PRODUCT N°1.0



/The provided drawings, areas, dimensions, and building materials are presented as close to reality as possible. The company reserves the right to make amendments based on specifications outlined in their records and in accordance with the project's marketing plans.

/the power of every piece



/The provided drawings, areas, dimensions, and building materials are presented as close to reality as possible. The company reserves the right to make amendments based on specifications outlined in their records and in accordance with the project's marketing plans.



/the power of every piece



/The provided drawings, areas, dimensions, and building materials are presented as close to reality as possible. The company reserves the right to make amendments based on specifications outlined in their records and in accordance with the project's marketing plans.

PUBLICATION N°1.0

PRODUCT N°1.0



/The provided drawings, areas, dimensions, and building materials are presented as close to reality as possible. The company reserves the right to make amendments based on specifications outlined in their records and in accordance with the project's marketing plans.

/the power of every piece



/The provided drawings, areas, dimensions, and building materials are presented as close to reality as possible. The company reserves the right to make amendments based on specifications outlined in their records and in accordance with the project's marketing plans.

PUBLICATION N°1.0

PRODUCT N°1.0



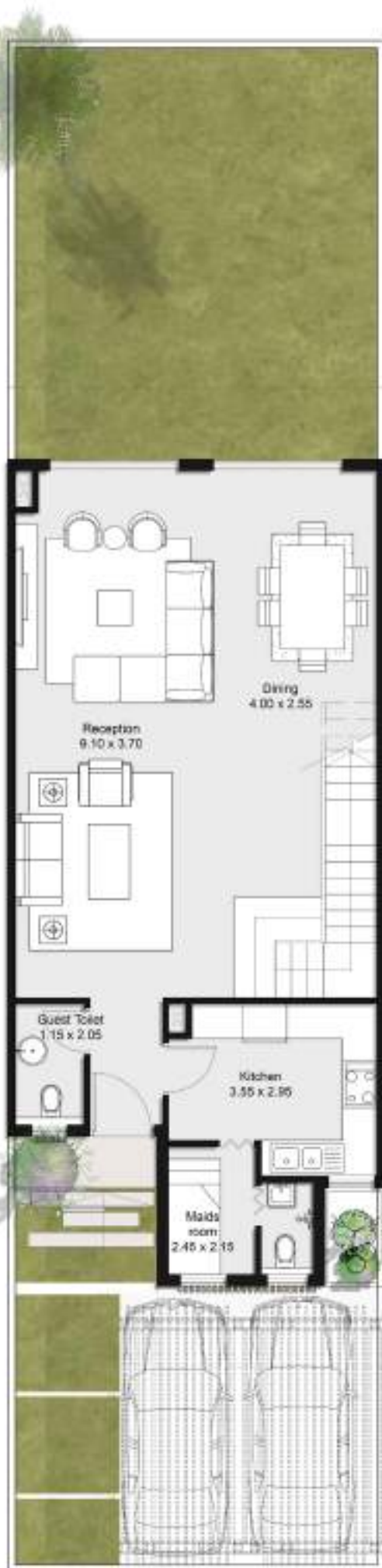
/The provided drawings, areas, dimensions, and building materials are presented as close to reality as possible. The company reserves the right to make amendments based on specifications outlined in their records and in accordance with the project's marketing plans.

/the power of every piece

floor plans

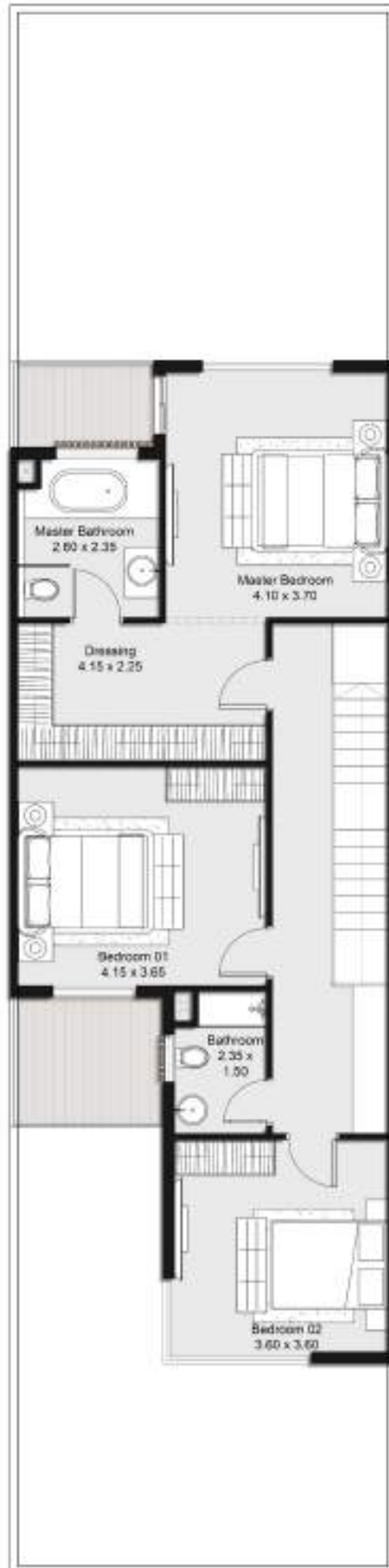


TOWNHOUSE 01
GROUND FLOOR
AREA 180 SQM | G+1



/the power of every piece

TOWNHOUSE 01
FIRST FLOOR
AREA 180 SQM | G+1



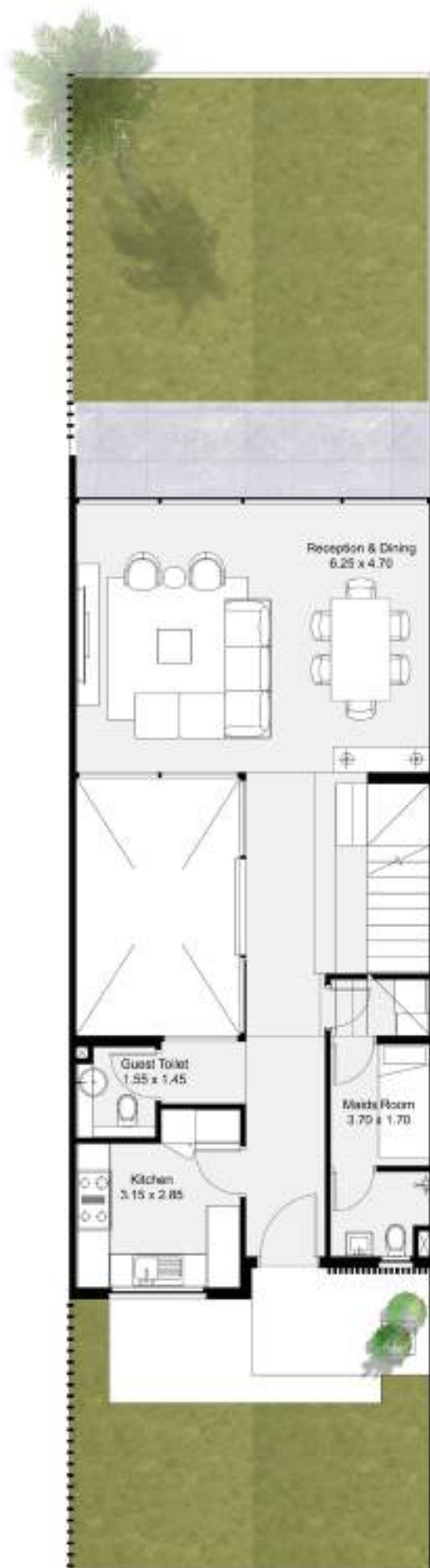
/The provided drawings, areas, dimensions, and building materials are presented as close to reality as possible. The company reserves the right to make amendments based on specifications outlined in their records and in accordance with the project's marketing plans.



TOWNHOUSE 02

GROUND FLOOR

AREA 174 SQM | G + 1 + R

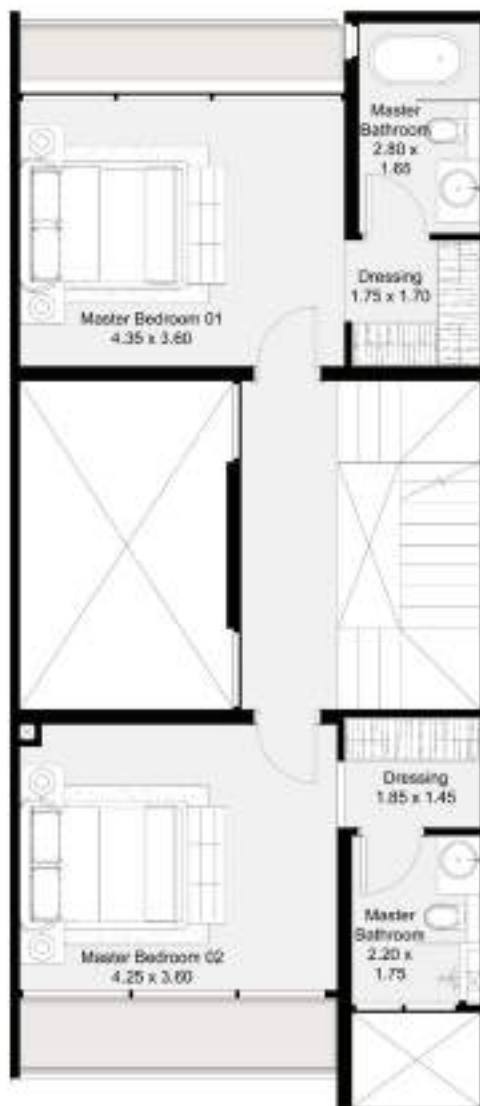


/the power of every piece

TOWNHOUSE 02

FIRST FLOOR

AREA 174 SQM | G + 1 + R



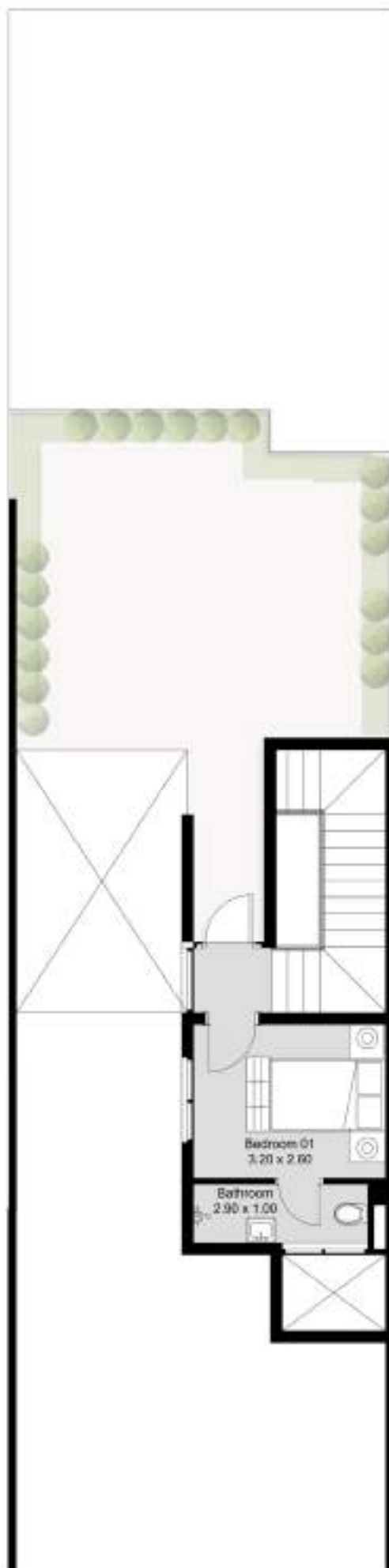
/The provided drawings, areas, dimensions, and building materials are presented as close to reality as possible. The company reserves the right to make amendments based on specifications outlined in their records and in accordance with the project's marketing plans.

/the power of every piece

TOWNHOUSE 02

ROOF | 52 SQM

AREA 174 SQM | G + 1 + R



/The provided drawings, areas, dimensions, and building materials are presented as close to reality as possible. The company reserves the right to make amendments based on specifications outlined in their records and in accordance with the project's marketing plans.

PUBLICATION N°1.0

PRODUCT N°1.0

TWIN VILLA

GROUND FLOOR

AREA 212 SQM | G + 1 + R



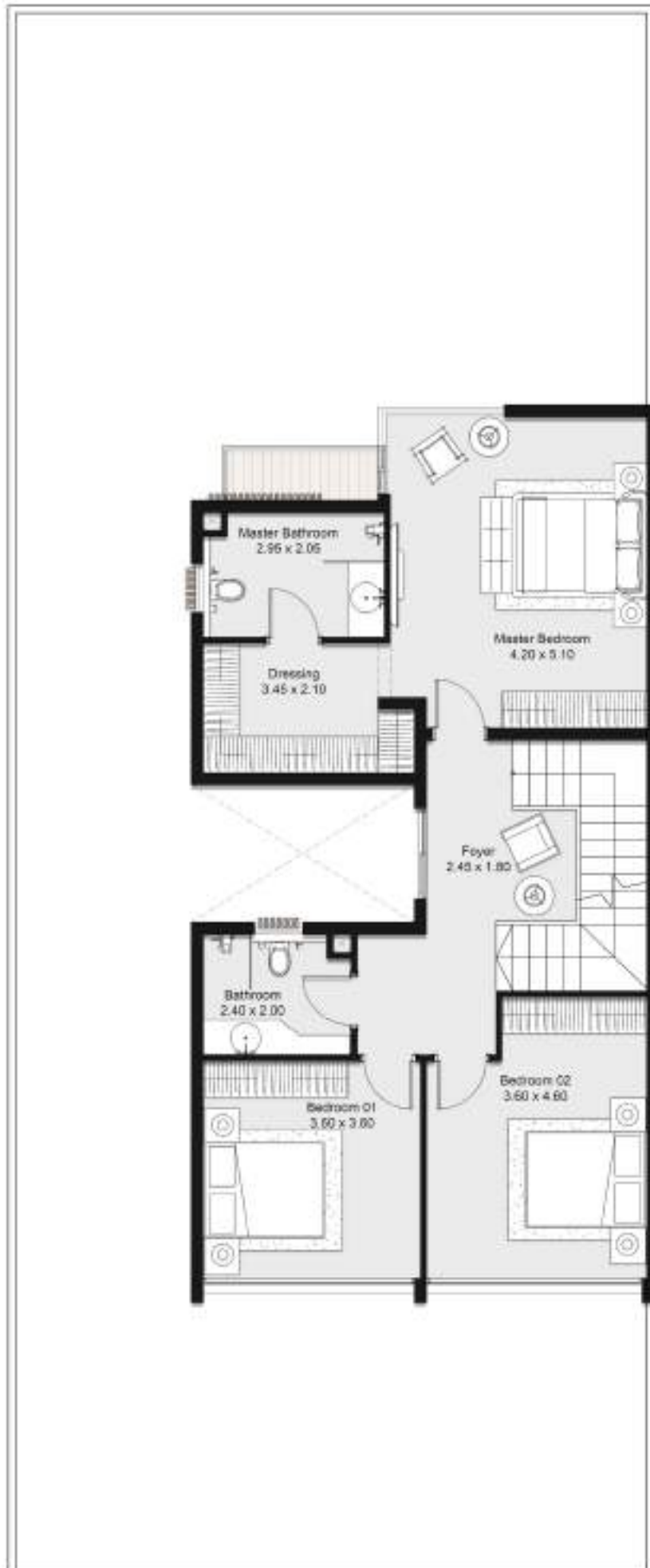
/The provided drawings, areas, dimensions, and building materials are presented as close to reality as possible. The company reserves the right to make amendments based on specifications outlined in their records and in accordance with the project's marketing plans.

/the power of every piece

TWIN VILLA

FIRST FLOOR

AREA 212 SQM | G + 1 + R



/The provided drawings, areas, dimensions, and building materials are presented as close to reality as possible. The company reserves the right to make amendments based on specifications outlined in their records and in accordance with the project's marketing plans.

/the power of every piece

TWIN VILLA

ROOF | 78 SQM

AREA 212 SQM | G + 1 + R



/The provided drawings, areas, dimensions, and building materials are presented as close to reality as possible. The company reserves the right to make amendments based on specifications outlined in their records and in accordance with the project's marketing plans.

PUBLICATION N°1.0

PRODUCT N°1.0

VILLA 0 LOT

GROUND FLOOR

AREA 230 SQM | G + 1 + R



/The provided drawings, areas, dimensions, and building materials are presented as close to reality as possible. The company reserves the right to make amendments based on specifications outlined in their records and in accordance with the project's marketing plans.

/the power of every piece

VILLA 0 LOT

FIRST FLOOR

AREA 230 SQM | G + 1 + R



/The provided drawings, areas, dimensions, and building materials are presented as close to reality as possible. The company reserves the right to make amendments based on specifications outlined in their records and in accordance with the project's marketing plans.

PUBLICATION N°1.0

PRODUCT N°1.0

VILLA 0 LOT

ROOF | 67 SQM

AREA 230 SQM | G + 1 + R



/The provided drawings, areas, dimensions, and building materials are presented as close to reality as possible. The company reserves the right to make amendments based on specifications outlined in their records and in accordance with the project's marketing plans.

/the power of every piece

VILLA V02

GROUND FLOOR

AREA 256 SQM | G + 1 + R



/The provided drawings, areas, dimensions, and building materials are presented as close to reality as possible. The company reserves the right to make amendments based on specifications outlined in their records and in accordance with the project's marketing plans.

VILLA V02

FIRST FLOOR

AREA 256 SQM | G + 1 + R



/the power of every piece

VILLA V02

ROOF | 90 SQM

AREA 256 SQM | G + 1 + R



/The provided drawings, areas, dimensions, and building materials are presented as close to reality as possible. The company reserves the right to make amendments based on specifications outlined in their records and in accordance with the project's marketing plans.

PUBLICATION N°1.0

PRODUCT N°1.0

VILLA V01

GROUND FLOOR

AREA 295 SQM | G + 1 + R



/The provided drawings, areas, dimensions, and building materials are presented as close to reality as possible. The company reserves the right to make amendments based on specifications outlined in their records and in accordance with the project's marketing plans.

/the power of every piece

VILLA V01

FIRST FLOOR

AREA 295 SQM | G + 1 + R



/The provided drawings, areas, dimensions, and building materials are presented as close to reality as possible. The company reserves the right to make amendments based on specifications outlined in their records and in accordance with the project's marketing plans.

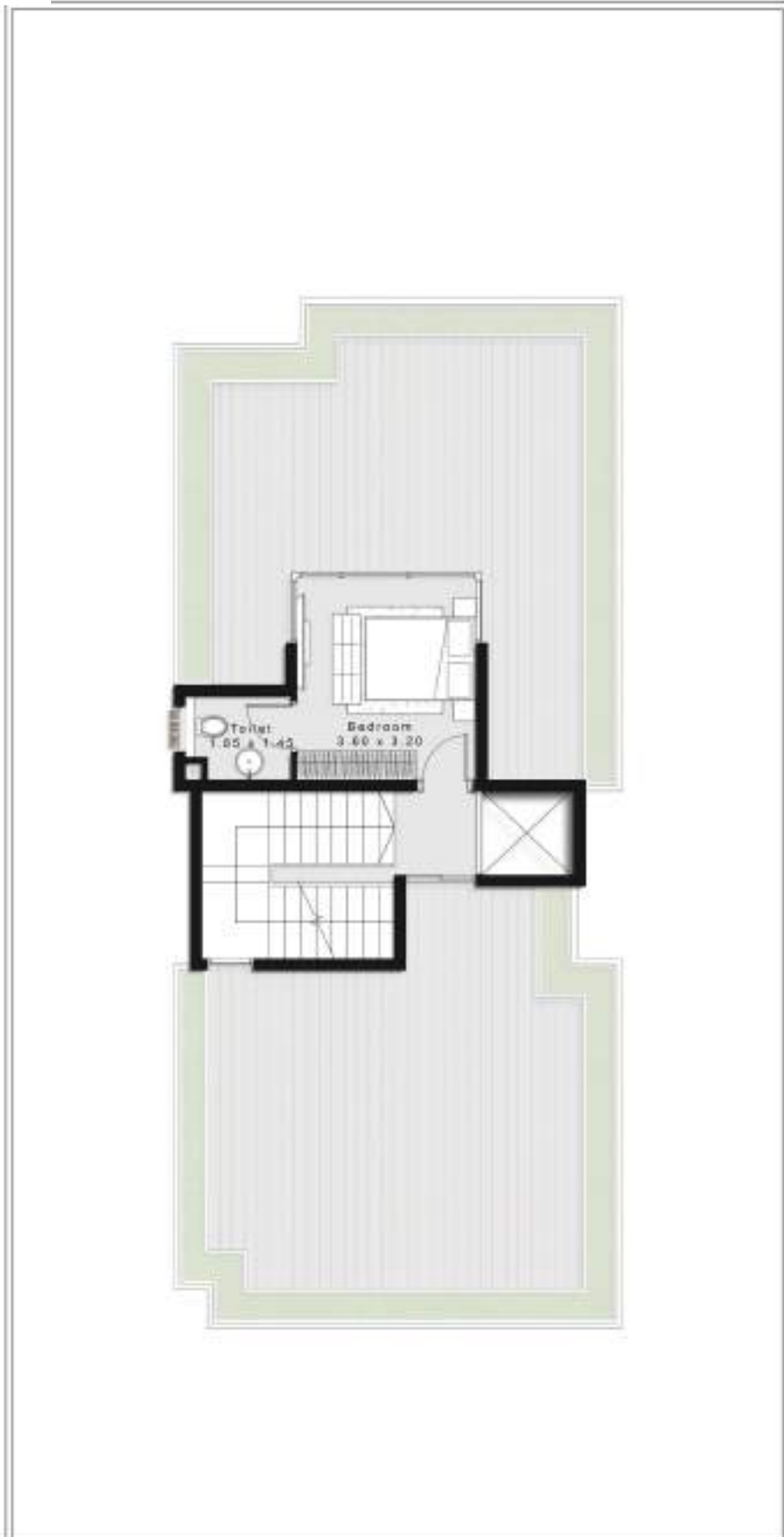
PUBLICATION N°1.0

PRODUCT N°1.0

VILLA V01

ROOF | 96 SQM

AREA 295 SQM | G + 1 + R



/the power of every piece

ANNETTE RES

Clubhouse | Hotel – Marriott | *Mixed Used* | Commercial | Residential
| Retail | *Hospitality* | Entertainment | **Finishing Specs** | ACs | Kitchen
Cabinets | *Diverse product mix* | 1 bedroom | 2 bedroom | 3 bedroom
| Duplex | *Loft* | Twin House | Town House | Standalone Villa |
Underground Parking | 2 slots/unit | Proximity Location | Coworking
Spaces | Storage Area | *Triple Play* | **Water Features & Fountains**
| Concierge | *Double Height Entrances* | Garbage Chutes | Smart
Light Systems | *Co Living Spaces* | Swimming Pools | Underground
Parking | Gyms | Spa | **Pets Zone** | Kids Area | Bike Lane | *Lounges* |
Library | *Gaming Lounge*

the
power
of every
piece

LAND OWNER AND MAIN PARTNER



HOSPITALITY PARTNER



OUR PARTNERS



CHAPMAN TAYLOR

BENOY



Melee

thisismelee.com